

## Industrial zone Severní Předlice



GPS	<a href="https://www.google.com/maps/place/50.6655972,13.9835303">50.6655972, 13.9835303</a>
Area of the site	61 ha, without the possibility of extension
Used area	59,9 ha, i. e. 98 %
Open area (available area)	1,1 ha, i. e. 2 %
Geographic location	District: Ústí nad Labem Cadastral coordinates: Y 764689, X 975000 The zone is located in Ústí nad Labem on the border of municipal district of Předlice and Trmice town. Location adjacent to the D8 motorway, partly insulated green areas.
The best way of possible use	Manufacturing activity or entertainment services, commercial, administrative, exhibition - fair, storage, transportation and maintenance
Land owners	Municipal authority of Usti nad Labem
Contact person	Marta Šašková, telephone number: +420475271697, e-mail: <a href="mailto:marta.saskova@mag-ul.cz">marta.saskova@mag-ul.cz</a>

### ENGYNEERING (UTILITY) NETWORKS:

- ✔ Potable (drinking) water - supply zones can provide connection to municipal systems (specifically water feeder Meziboří - Chlumec)
- ✔ Electricity – wiring 22 kV, 35 kV, 110 kV are easily reachable
- ✔ Sewer system - rainwater and sewerage, a combination of gravity and pressure, connection to municipal systems in combination with a separate devices, in which case the watercourse is Ždírnický creek.
- ✔ Gas distribution - STL gas pipeline distribution is available
- ✔ Data networks
- ✘ Service (industrial) water

### INVESTORS IN THE ZONE:

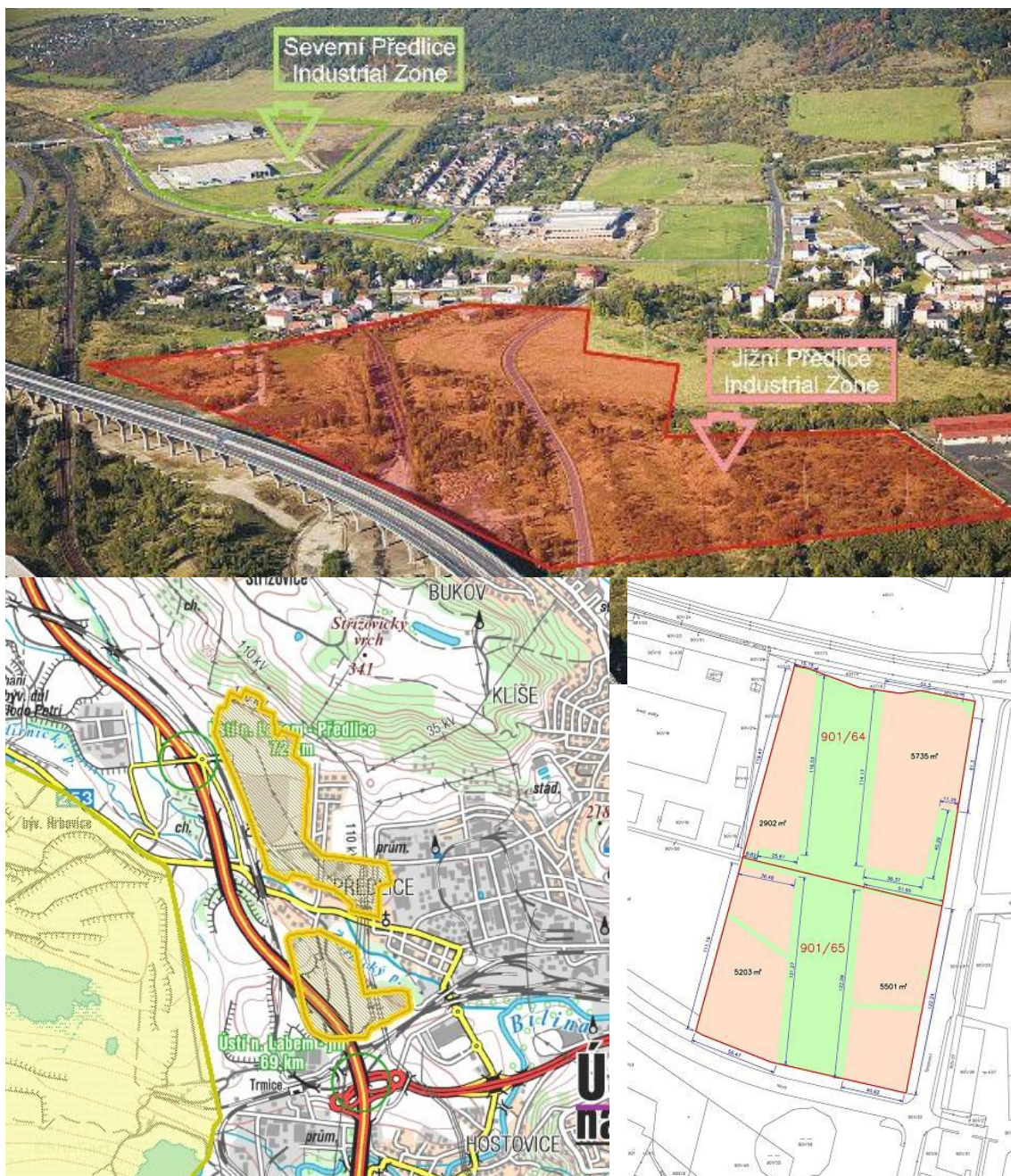
Investor	Telephone number	E-mail	Website
KONE Industrial – koncern s.r.o.	+420 477 752 111	<a href="mailto:usti@kone.com">usti@kone.com</a>	<a href="http://www.kone.cz">http://www.kone.cz</a>
Materialise, s.r.o.	+420 474 720 005	<a href="mailto:PROJEKTY@MATERIALISE.CZ">PROJEKTY@MATERIALISE.CZ</a>	<a href="http://www.materialise.cz">http://www.materialise.cz</a>
ArcelorMittal – Stainless Automotive Tubes Czech Republic s.r.o.	+420 477 757 101		<a href="http://www.aperam.com">http://www.aperam.com</a>
Česká pošta, s. p.	+420 475 253 486	<a href="mailto:info@cpost.cz">info@cpost.cz</a>	<a href="http://ceskaposta.cz">http://ceskaposta.cz</a>
CocaCola Beverages Česká republika s.r.o.			
Nüsin ČR spol. s r. o.	+420 475 214 654	<a href="mailto:info@pricky.cz">info@pricky.cz</a>	<a href="http://www.nuesing.cz">http://www.nuesing.cz</a>
ACTIVA spol. s r.o.	+420 475 500 312	<a href="mailto:usti@activa.cz">usti@activa.cz</a>	<a href="http://www.activa.cz">http://www.activa.cz</a>
Minorec k.s.	+420 475 507 135	<a href="mailto:info@minorec.cz">info@minorec.cz</a>	<a href="http://www.minorec.cz">http://www.minorec.cz</a>

## EMPLOYEE INFORMATION:

- Number of employees: not specified
- Estimated Number of Employees: not specified

## LIMITS AND RESTRICTIONS:

- Respecting the urban zone position on the edge of intensely urban space, it is necessary to take into consideration the relation of zone to the contact area - especially to the residential area.
- Limits are protective zones of high voltage lines and steam piping passing through the zone.



Source: [city website - Ustí nad Labem](#) and [Regional Information Service](#)